

Estimated Resident Population — June Quarter 2019

ABS Cat. No. 3101.0

Publication Release Date: 19 December 2019 | Brief Release Date: 19 December 2019 | Next Brief Release Date: 19 March 2020



ACT
Government

Chief Minister, Treasury and
Economic Development

ACT's population continues to grow in the June Quarter 2019

ACT

In the June quarter 2019, the estimated resident population rose by 978 persons (0.2 per cent) to 426,709 persons.

Through the year¹ to the June quarter 2019, the estimated resident population increased by 6,330 persons (1.5 per cent). The 2018-19 estimated resident population growth of 1.5 per cent is lower than the 2019-20 ACT Budget forecast of 2 per cent in 2018-19.

National

In the June quarter 2019, the estimated resident population rose by 75,551 persons (0.3 per cent) to 25,364,307 persons.

Through the year to the June quarter 2019, the estimated resident population increased by 381,619 persons (1.5 per cent).

Estimated Resident Population as at 30 June 2019, ACT and Australia

	<i>Persons</i>	<i>Change (%)</i>	
		<i>Quarterly</i>	<i>tty¹</i>
Australian Capital Territory	426,709	0.2	1.5
Australia	25,364,307	0.3	1.5

Source: ABS Cat No. 3101.0.

Quarterly Change in Estimated Resident Population by Component as at 30 June 2019, ACT and Australia

	<i>Natural Increase*</i> <i>Persons</i>	<i>Net Overseas Migration</i> <i>Persons</i>	<i>Net Interstate Migration</i> <i>Persons</i>	<i>Total Change</i> <i>Persons</i>
Australian Capital Territory	863	148	-33	978
Australia	40,676	34,875	-	75,551

Source: ABS Cat No. 3101.0.

* Natural increase is number of births less number of deaths.

Through the Year Change in Estimated Resident Population by Component as at 30 June 2019, ACT and Australia

	<i>Natural Increase*</i> <i>Persons</i>	<i>Net Overseas Migration</i> <i>Persons</i>	<i>Net Interstate Migration</i> <i>Persons</i>	<i>Total Change</i> <i>Persons</i>
Australian Capital Territory	3,409	3,115	-194	6,330
Australia	143,281	238,338	-	381,619

Source: ABS Cat No. 3101.0.

* Natural increase is number of births less number of deaths.

¹ Through the year (tty) is the percentage change from the same period in the previous year.

Commentary

In the June quarter 2019, *natural increase* (births less deaths) recorded a net gain of 863 persons, the largest contributor to overall population growth. *Net overseas migration* also contributed positively, recording a net gain of 148 persons in the June quarter 2019. Over the June quarter 2019, *net interstate migration* recorded a net outflow of 33 persons from the ACT.

The ACT (up 0.2 per cent) recorded the third strongest growth in estimated resident population of all jurisdictions in the June quarter 2019, behind Victoria (up 0.4 per cent) and Queensland (up 0.4 per cent).

Through the year to the June quarter 2019, the ACT's population increased by 6,330 persons (1.5 per cent). *Natural increase* was also the largest contributor to population growth through the year to the June quarter 2019, increasing by 3,409 persons. *Net overseas migration* (up 3,115 persons) also contributed positively to population growth. *Net interstate migration* recorded a net outflow of 194 persons from the ACT.

The ACT (up 1.5 per cent) recorded the third strongest growth in estimated resident population of all jurisdictions through the year to the June quarter 2019, behind Victoria (up 2.1 per cent) and Queensland (up 1.7 per cent). The Northern Territory (down 0.5 per cent) was the only jurisdiction to record a decline in population through the year to the June quarter 2019.

Estimated Resident Population as at 30 June 2019

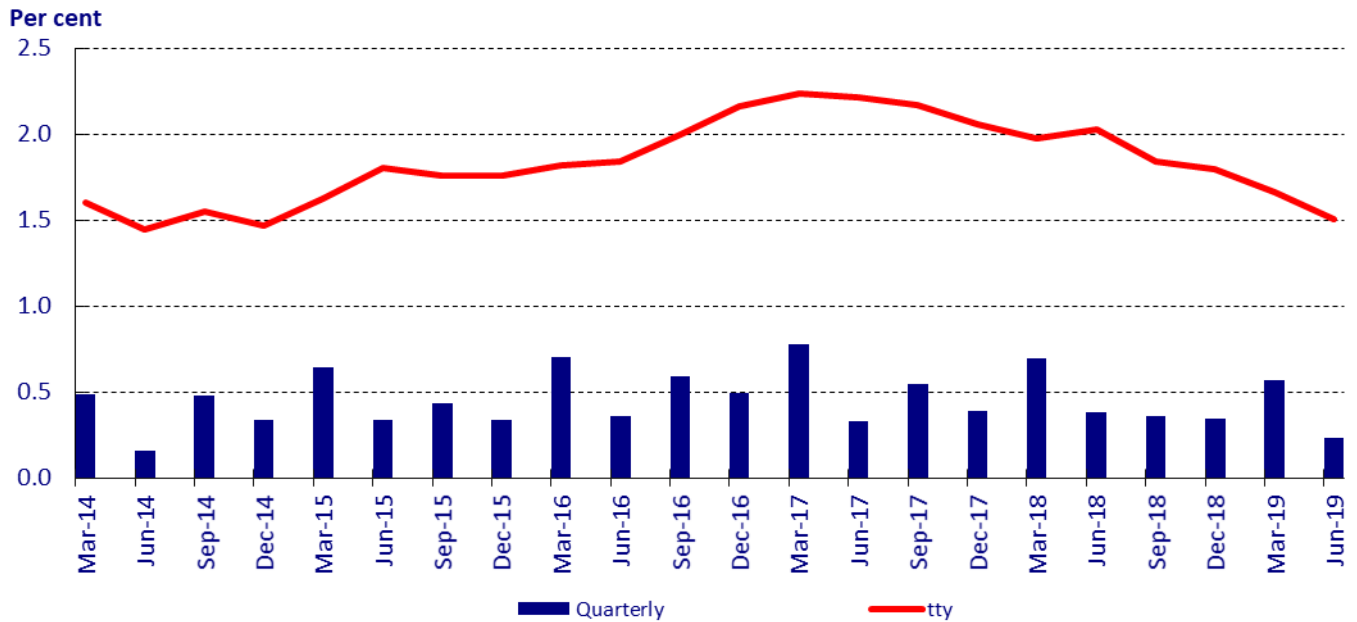
State / Territory Comparison — Original data

State/Territory	Number	% Change	
		Quarterly	tty
New South Wales	8,089,526	0.2	1.4
Victoria	6,594,804	0.4	2.1
Queensland	5,095,100	0.4	1.7
South Australia	1,751,693	0.2	0.9
Western Australia	2,621,680	0.2	1.1
Tasmania	534,281	0.2	1.1
Northern Territory	245,869	0.2	-0.5
Australian Capital Territory	426,709	0.2	1.5
Australia ^a	25,364,307	0.3	1.5

Source: ABS Cat. No. 3101.0

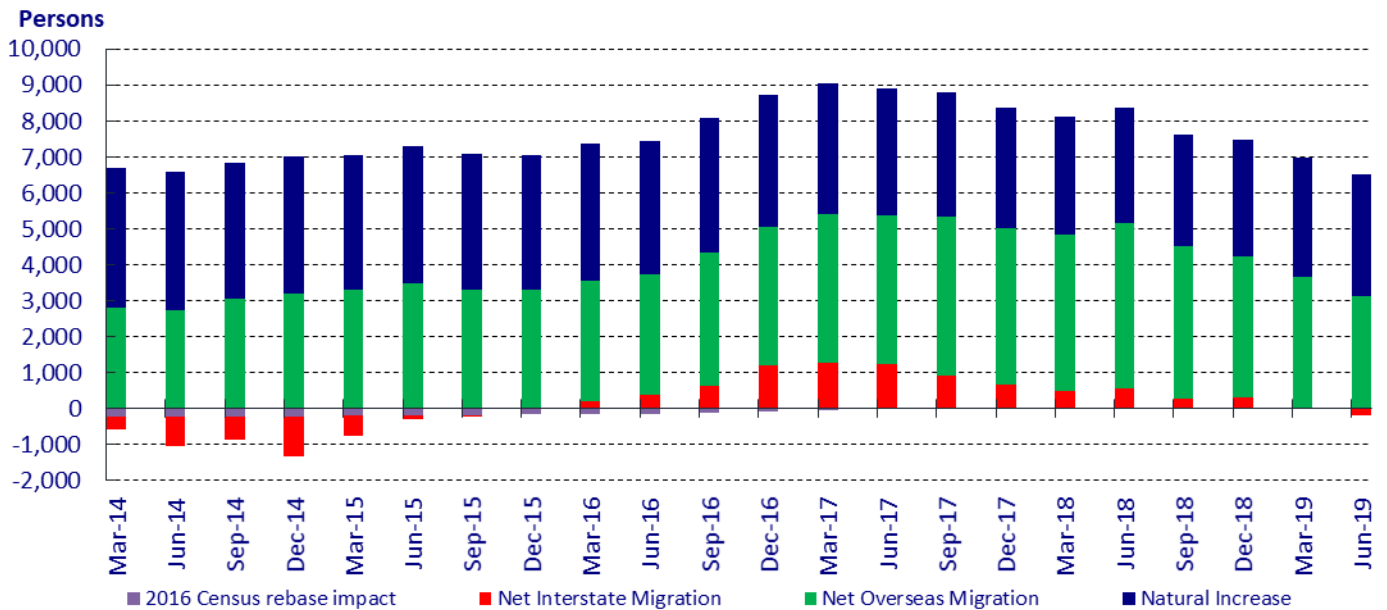
(a) Includes other Territories comprising Jervis Bay, Christmas Island, and the Cocos (Keeling) Islands.

Growth in Estimated Resident Population, ACT



Source: ABS Cat No. 3101.0

Through the Year Population Change by Component, ACT



Source: ABS Cat No. 3101.0

Note: Population components prior to September quarter 2016 will not sum to total population growth due to intercensal difference. Components from September quarter 2016 onwards will sum to total population growth as the intercensal difference for this period will not be known until after the 2021 Census.

Intercensal difference is the difference between the preliminary ERP for 30 June in a Census year (carried forward from the previous Census base using births, deaths and migration data) and the final ERP for the same time point (based on the new Census). The intercensal difference by age and sex for each state and territory is spread evenly across the intercensal quarters. Thus intercensal difference acts as a balancing item that when combined with births, deaths and migration equals total population growth for that period.

Definition

The quarterly estimated resident population (ERP) is based on the results of the **2016 Census of Population and Housing**, with estimates made for each of the components of change. The quarterly ERP for Australia is compiled by adding the component of natural increase (births minus deaths) and the component of net overseas migration (arrivals minus departures) to the estimated resident population at the beginning of each period. For the States and Territories, account is also taken of estimated interstate movements involving a change of usual residence.

Economic Indicators for the Australian Capital Territory can be found at: <http://apps.treasury.act.gov.au/snapshot>

Contact Officer: Dinesh Kumar (6207 0236) | Executive Branch Manager: Andrew Beaumont (6205 9121) | Macroeconomic Branch