

Retail trade turnover decreased in December 2019

ACT (seasonally adjusted¹)

The value of retail trade turnover decreased by 0.1 per cent in December 2019. Through the year² to December 2019, the value of retail trade turnover increased by 4.1 per cent.

National (seasonally adjusted)

The value of retail trade turnover decreased by 0.5 per cent in December 2019. Through the year to December 2019, the value of retail trade turnover increased by 2.7 per cent.

Retail Trade Turnover, Seasonally Adjusted, December 2019

	Value (\$m)	Change (%)	
		Monthly	tty ²
ACT	523	-0.1	4.1
Australia	27,765	-0.5	2.7

Source: ABS Cat. No. 8501.0

Commentary³

Retail trade turnover in the ACT decreased by 0.1 per cent in **December 2019**, following four consecutive monthly increases. This result was driven by a 4.5 per cent decrease in *Clothing, footwear and personal accessory* (contributing 0.3 of a percentage point to the overall decrease), followed by a 2.8 per cent decrease in *Department stores* (contributing 0.2 of a percentage point), a 1.0 per cent decrease in *Household goods* (contributing 0.2 of a percentage point), a 0.7 per cent decrease in *Other retailing* (contributing 0.1 of a percentage point) and a 0.6 per cent decrease in *Cafes, restaurants and takeaway food services* (contributing 0.1 of a percentage point).

These decreases were partially offset by a 1.8 per cent increase in *Food retailing*, contributing 0.8 of a percentage point.⁴

Through the year growth in the ACT's retail trade turnover has been positive for 5½ years as of December 2019. All jurisdictions experienced an increase in retail trade turnover through the year to December 2019, with the ACT recording the third highest growth, behind Tasmania (up 6.8 per cent) and Queensland (up 4.7 per cent).

The 4.1 per cent through the year increase in retail trade turnover in the ACT was as a result of a 4.1 per cent increase in *Food Retailing* (contributing 1.8 percentage points to overall growth), followed by a 4.5 per cent increase in *Cafes, restaurants and takeaway food services* (contributing 0.6 of a percentage point), a 3.4 per cent increase in *Household goods* (contributing 0.6 of a percentage point), a 4.8 per cent increase in *Other retailing* (contributing 0.5 of a percentage point), a 6.4 per cent increase in *Department stores* (contributing 0.4 of a percentage point) and a 1.3 per cent increase in *Clothing, footwear and personal accessory* (contributing 0.1 of a percentage point).⁴

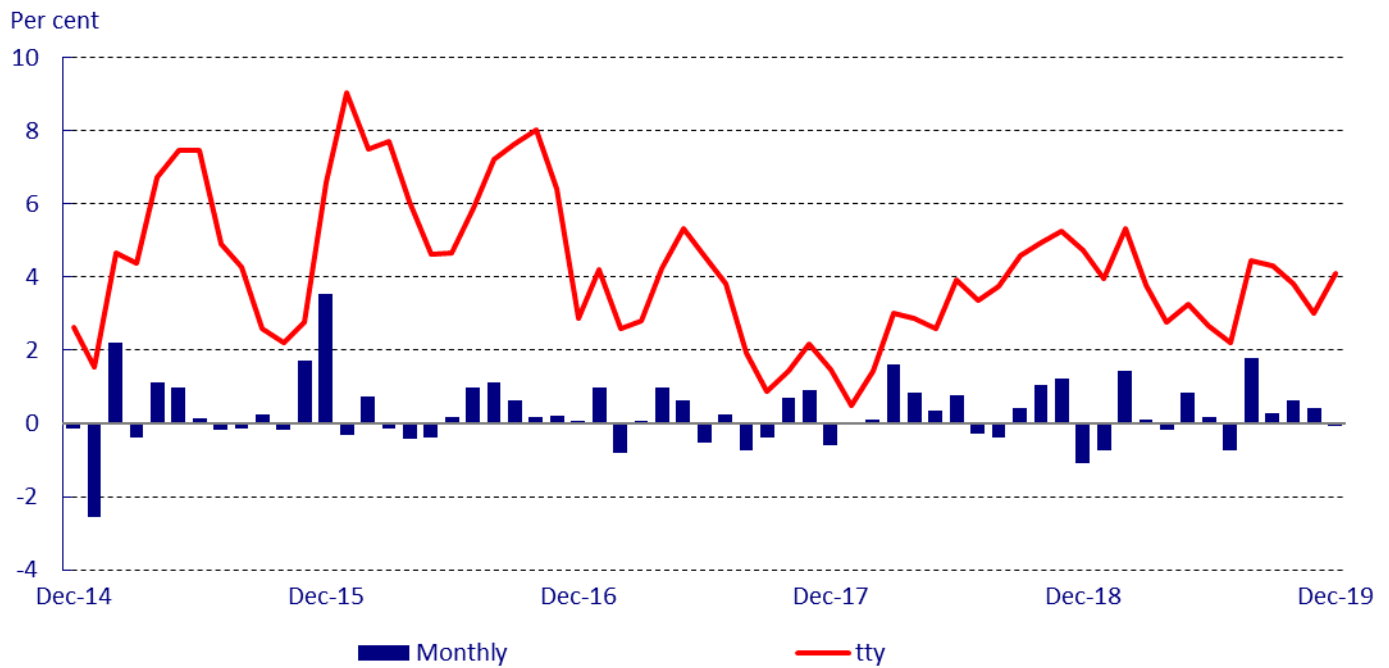
¹ Seasonally adjusted data takes into account calendar effects so that the effects of other influences on the series may be clearly recognised.

² Through the year (tty) is the percentage change from the same period in the previous year.

³ The ABS noted that "Bushfires resulted in only minor disruption to data collection activities during January 2020 in New South Wales, Victoria and the Australian Capital Territory. Quality assurance undertaken by the ABS confirmed that these disruptions to data collection did not result in any significant impact to the quality of December Retail Trade statistics. Some retail businesses reported negative impacts to retail turnover from bushfires in New South Wales in the December month, especially in Food retailing and Cafes, restaurants and takeaway food services. These impacts are included in the aggregate data. Further impacts to retail turnover may be expected in other states and territories in the January 2020 statistics."

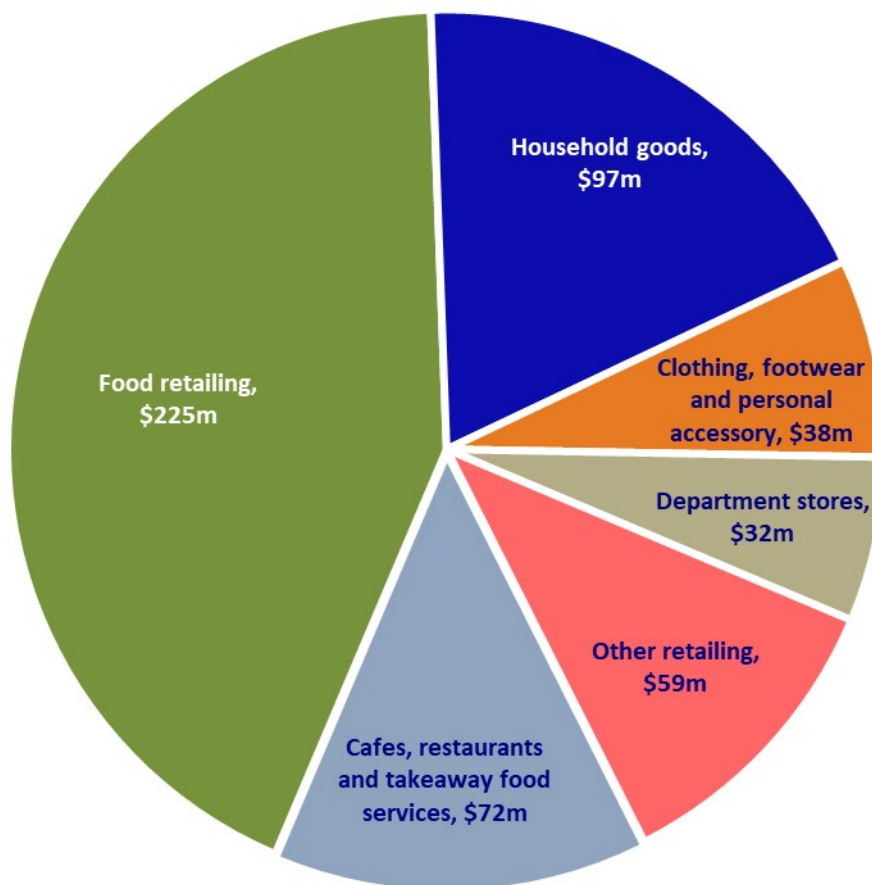
⁴ Percentage contributions of all industry sectors may not add up to the overall growth rate due to rounding.

Growth in ACT Retail Trade Turnover, Seasonally Adjusted



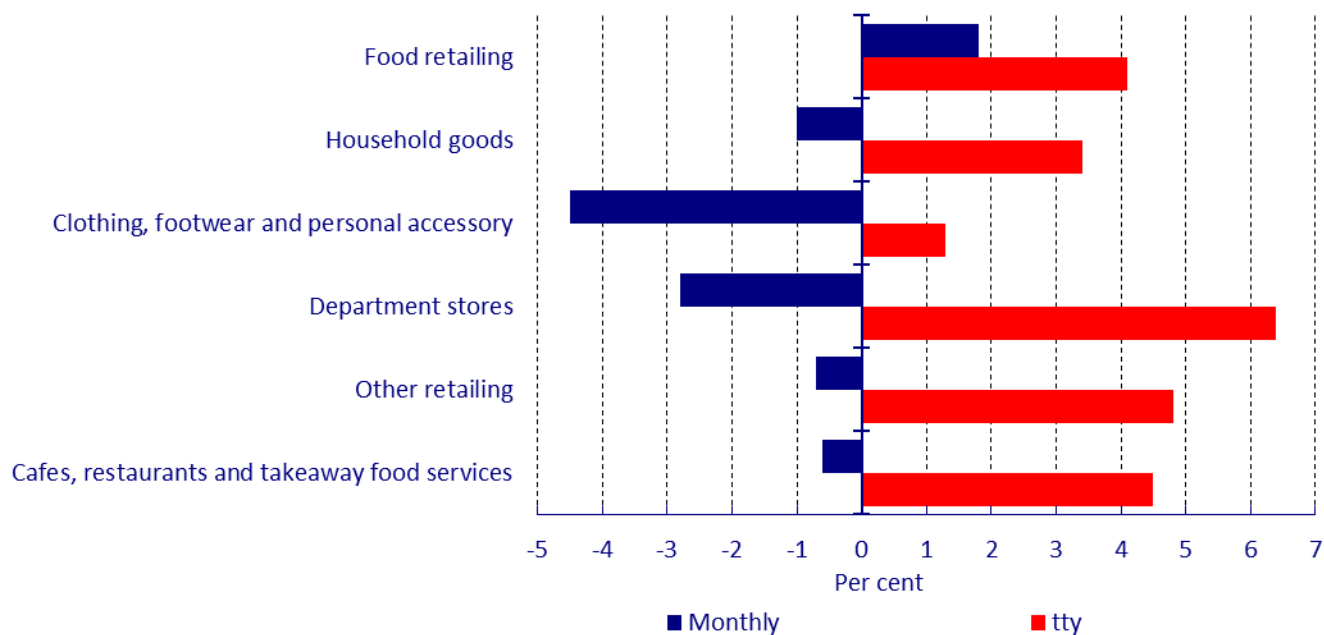
Source: ABS Cat. No. 8501.0.

Retail Trade Turnover (ACT) by Industry Sector, Seasonally Adjusted, December 2019



Source: ABS Cat. No. 8501.0.

Growth in Retail Trade Turnover (ACT) by Industry Sector, Seasonally Adjusted, December 2019

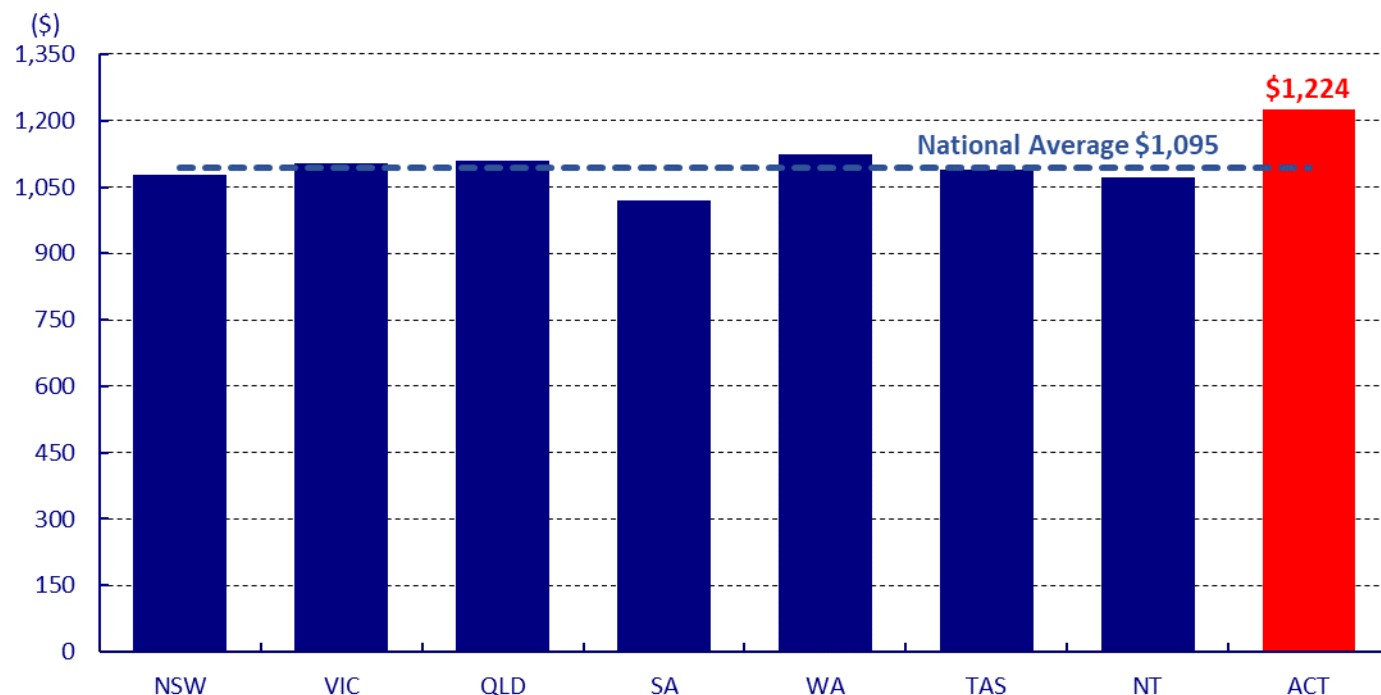


Source: ABS Cat. No. 8501.0.

Retail Trade Turnover per capita

In December 2019, retail trade turnover per capita in the ACT was \$1,224, the highest of any state and territory. The national average retail trade turnover per capita was \$1,095 for the month.

Retail Trade Turnover per capita by State/Territory, Seasonally Adjusted, December 2019



Source: ACT Treasury calculation based on ABS Cat. No. 3101.0 and 8501.0.

Note: Retail trade turnover per capita is calculated by dividing the estimate of retail trade turnover (ABS Cat No. 8501.0) by the latest estimated resident population (ABS Cat No. 3101.0).

Retail Trade – December Quarter 2019⁵

Real value of retail trade turnover increased in the December Quarter 2019

ACT (chain volume measures⁶ – seasonally adjusted)

The quarterly *real value* of retail trade turnover increased by 1.4 per cent in the December quarter 2019. Through the year² to the December quarter 2019, the real value of retail trade turnover increased by 1.5 per cent.

National (chain volume measures – seasonally adjusted)

The quarterly *real value* of retail trade turnover increased by 0.5 per cent in the December quarter 2019. Through the year to the December quarter 2019, the real value of retail trade turnover increased by 0.4 per cent.

Retail Trade Turnover, Seasonally Adjusted, December Quarter 2019

	Real Value (\$m)	Change (%)	
		Quarter	tty ²
ACT	1,504	1.4	1.5
Australia	80,186	0.5	0.4

Source: ABS Cat. No. 8501.0

Commentary

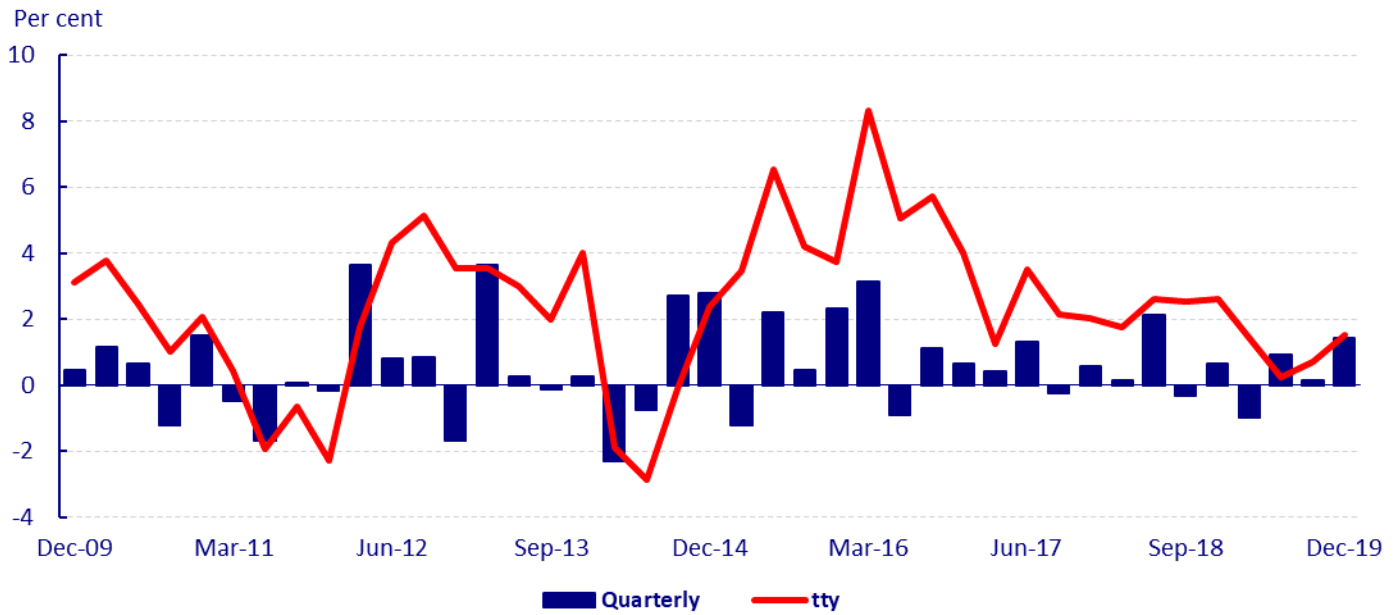
The 1.4 per cent increase in the quarterly real value of retail trade turnover in the **December quarter 2019** was the second largest increase of all jurisdictions, behind Tasmania (up 2.7 per cent). All jurisdictions, except South Australia (down 0.3 per cent) and New South Wales (down 0.1 per cent), recorded an increase in quarterly real value of retail trade turnover in the December quarter 2019.

Through the year to the December quarter 2019, the quarterly real value of retail trade turnover increased in Tasmania (up 2.9 per cent), Queensland (up 2.3 per cent), the ACT (up 1.5 per cent) and Western Australia (up 0.9 per cent). South Australia (down 1.1 per cent), New South Wales (down 0.7 per cent) and the Northern Territory (down 0.1 per cent), recorded decreases in the quarterly real value of retail trade turnover. Victoria recorded no growth in the quarterly real value of retail trade turnover through the year to the December quarter 2019.

⁵The reference and base year for chain volume measures are updated each September. A new base year, 2017-18, has been introduced into the chain volume estimates. This has resulted in revisions to growth rates in subsequent periods.

⁶Chain volume measures changes in value after the direct effects of price changes have been eliminated and hence only reflect volume changes; reference year 2017-18.

Growth in ACT Retail Trade Turnover, Real Value, Seasonally Adjusted

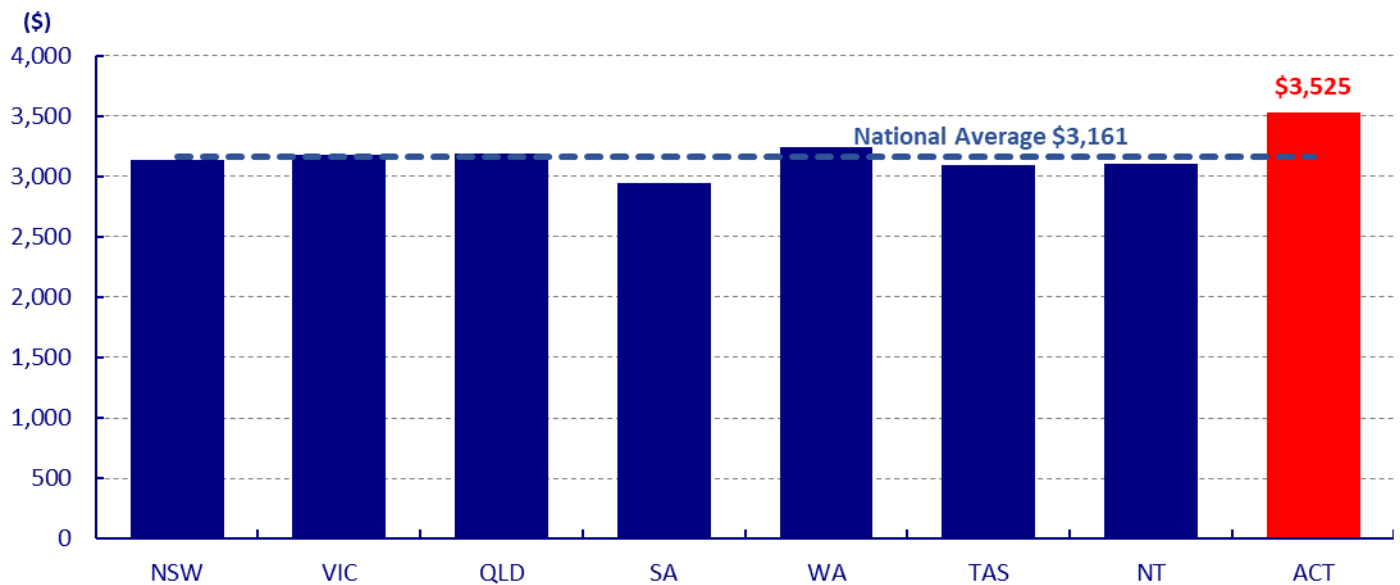


Source: ABS Cat. No. 8501.0

Quarterly Retail Trade Turnover per Capita, Real Value, Seasonally Adjusted

The real retail trade turnover per capita in the ACT increased by 1.5 per cent in the December quarter 2019 to \$3,525. This is 11.5 per cent higher than the national average of \$3,161.

Retail Trade Turnover per Capita by State/Territory, Real Value, Seasonally Adjusted, December Quarter 2019



Source: ACT Treasury calculation based on ABS Cat. No. 3101.0 and 8501.0. Reference year for chain volume measure (real value) is 2017-18.

Note: Retail trade turnover per capita is calculated by dividing the quarterly estimate of real retail trade turnover (ABS Cat No. 8501.0) by the latest estimated resident population (ABS Cat No. 3101.0).