

ACT unemployment rate remained unchanged in October 2018

ACT (Trend¹)

The unemployment rate remained unchanged at 3.7 per cent in October 2018, from an upwardly revised rate in September 2018. This remains the lowest unemployment rate of all jurisdictions. Through the year² to October 2018, the unemployment rate decreased by 0.3 of a percentage point.

In October 2018, employment decreased by 0.2 per cent or 400 persons to 227,200 persons. Through the year to October 2018, employment decreased by 2,400 persons (1.0 per cent).

The participation rate in October 2018 decreased by 0.2 of a percentage point to 70.1 per cent, from a downwardly revised participation rate in September 2018. This remains the second highest participation rate of all jurisdictions. Through the year to October 2018, the participation rate decreased by 2.2 percentage points.

National (Seasonally Adjusted)

The unemployment rate was steady at 5.0 per cent in October 2018. Through the year to October 2018, the unemployment rate decreased by 0.4 of a percentage point.

In October 2018, employment increased by 32,800 persons to 12,671,500 persons. Through the year to October 2018, employment increased by 308,100 persons (2.5 per cent).

The participation rate in October 2018 increased by 0.1 of a percentage point to 65.6 per cent. Through the year to October 2018, the participation rate increased by 0.3 of a percentage point.

Key Measures, ACT and Australia, October 2018

	Level	Change	
		Monthly	tty ²
<u>ACT- Trend</u>			
Unemployment rate (%)	3.7	-0.0 ppts ³	-0.3 ppts
Unemployed persons ('000)	8.6	-0.0	-1.0
Employed persons ('000)	227.2	-0.4	-2.4
Employment growth (%)		-0.2	-1.0
Participation rate (%)	70.1	-0.2 ppts	-2.2 ppts
<u>Australia - Seasonally Adjusted</u>			
Unemployment rate (%)	5.0	+0.0 ppts	-0.4 ppts
Unemployed persons ('000)	672.1	4.6	-34.9
Employed persons ('000)	12,671.5	32.8	308.1
Employment growth (%)		0.3	2.5
Participation rate (%)	65.6	+0.1 ppts	+0.3 ppts

Source: ABS Cat. No. 6202.0

Note: Estimates of changes shown in this table and used in the commentary and charts have been calculated using unrounded estimates, and may be different from, but are more accurate than, movement obtained from the rounded estimates.

¹ Monthly removals of the effect of systematic calendar related patterns and the irregular (non-seasonal) influences across the entire series result in revisions of trend estimates on a monthly basis. Estimates are rounded and discrepancies may occur between the sums of component items and totals.

² Through the year (tty) is the percentage change from the same period in the previous year.

³ Percentage points (ppts)

Commentary

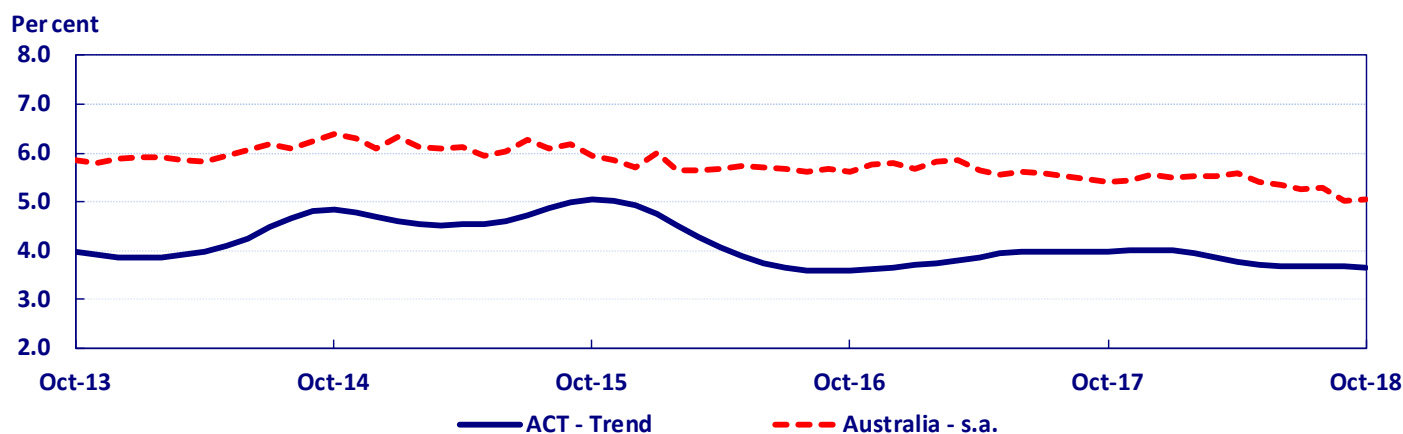
Employment decreased by 400 jobs in the ACT in October 2018, mainly driven by a decrease in full time jobs (down by 500 jobs), partially offset by a slight increase in part time jobs (up by less than 100 jobs). The 2,400 job losses over the year to October 2018 were the result of a decrease in full time employment (down by 3,100 jobs), partially offset by an increase in part time employment (up by 700 jobs).

The fall in the participation rate to 70.1 per cent in October 2018 was due to a decrease in the female participation rate (down 0.3 of a percentage point to 66.4 per cent), while the male participation rate was steady at 74.1 per cent.

The underutilisation rate⁴ in the ACT was steady at 10.0 per cent in October 2018, in trend terms, as both the underemployment rate and the unemployment rate were steady at 6.4 per cent and 3.7 per cent, respectively. Through the year to October 2018, the underutilisation rate was also unchanged due to an increase in the underemployment rate (up 0.3 of a percentage point), fully offset by a decrease in the unemployment rate (down 0.3 of a percentage point).

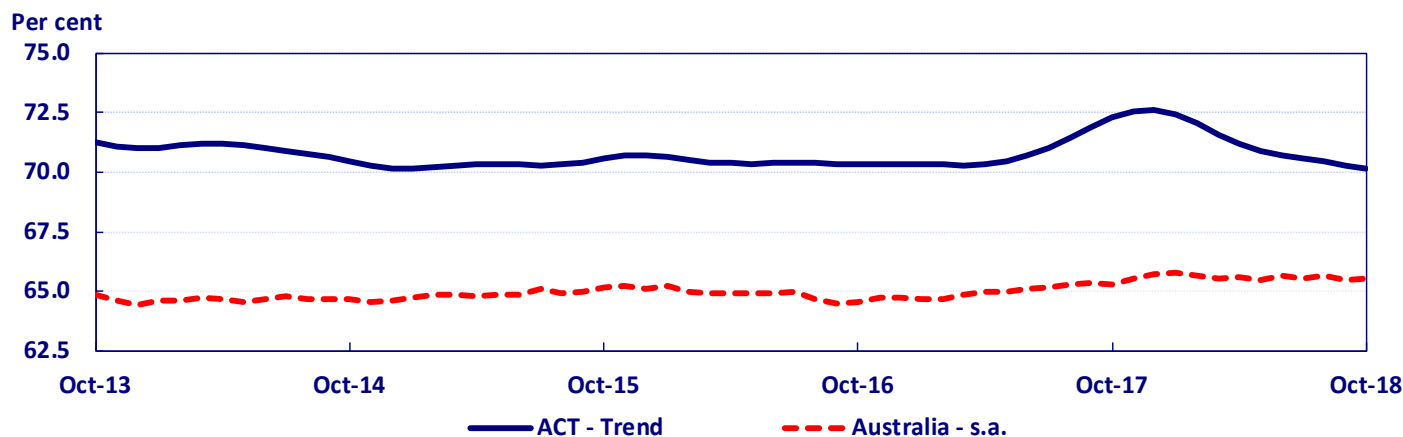
The youth⁵ unemployment rate in the ACT increased by 3.4 percentage points to 9.6 per cent in October 2018, though decreased by 0.2 of a percentage point over the past 12 months. This is below the national average rate of 11.3 per cent⁶.

Unemployment Rate, ACT and Australia



Source: ABS Cat. No. 6202.0

Participation Rate, ACT and Australia



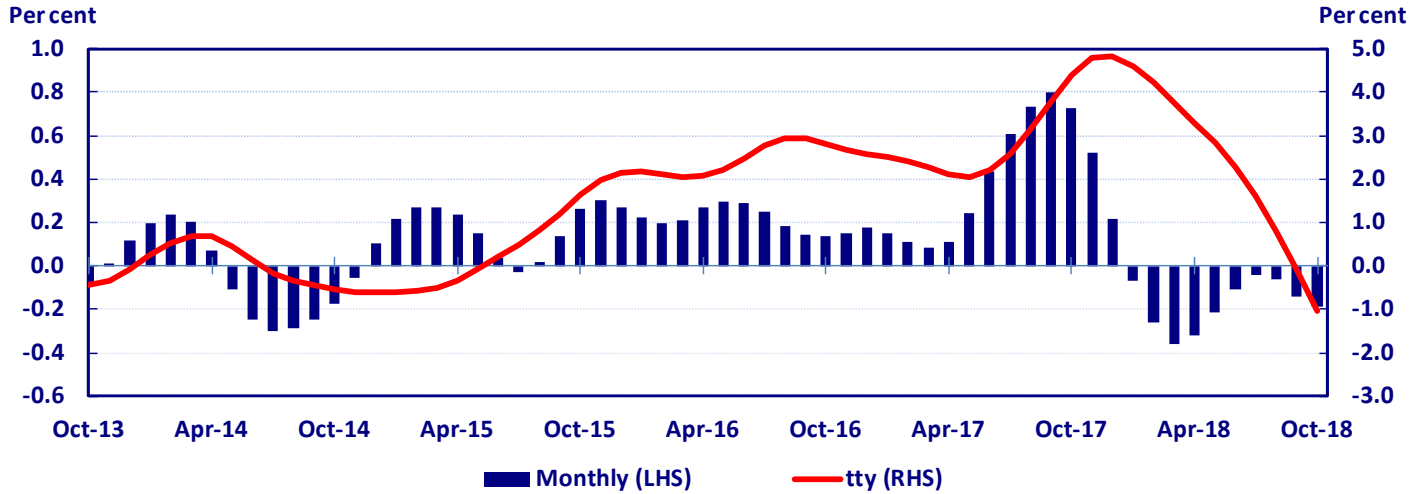
Source: ABS Cat. No. 6202.0

⁴ The *underutilisation rate* is the sum of the number of persons unemployed and the number of persons in underemployment, expressed as a proportion of the labour force. Underemployment is the number of employed persons aged 15 years and over who want, and are available for, more hours of work than they currently have.

⁵ Youth employment is defined as the employment for those aged 15-24 years; Data for states/territories is in original terms only and should be used with caution due to its volatility.

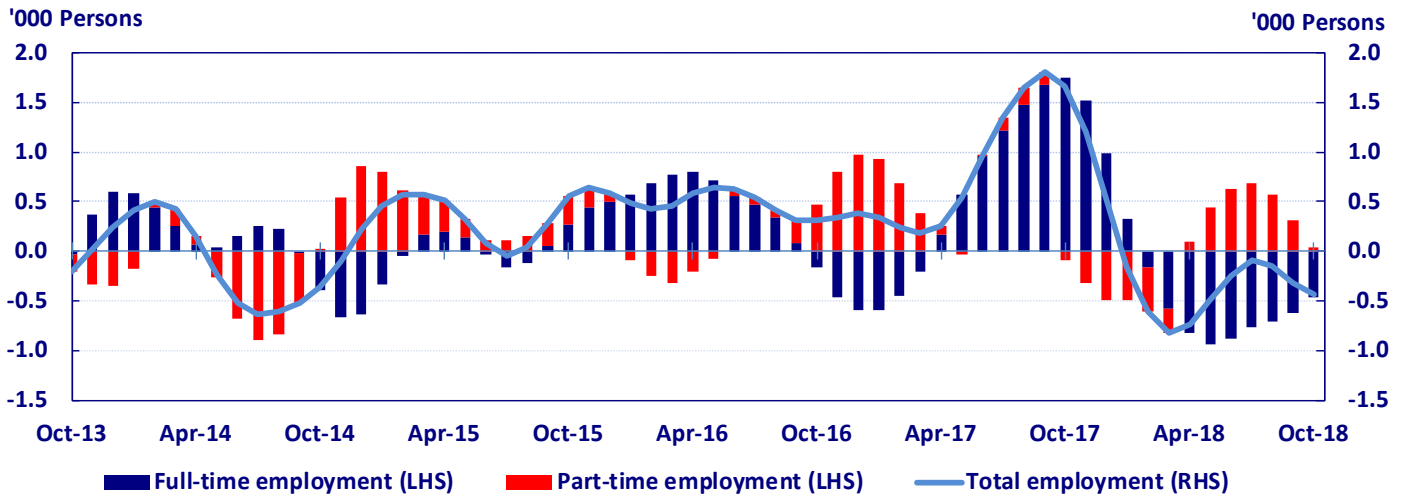
⁶ Youth unemployment rate for Australia is in seasonally adjusted terms.

Employment Growth (Per cent), Trend, Monthly Data, ACT



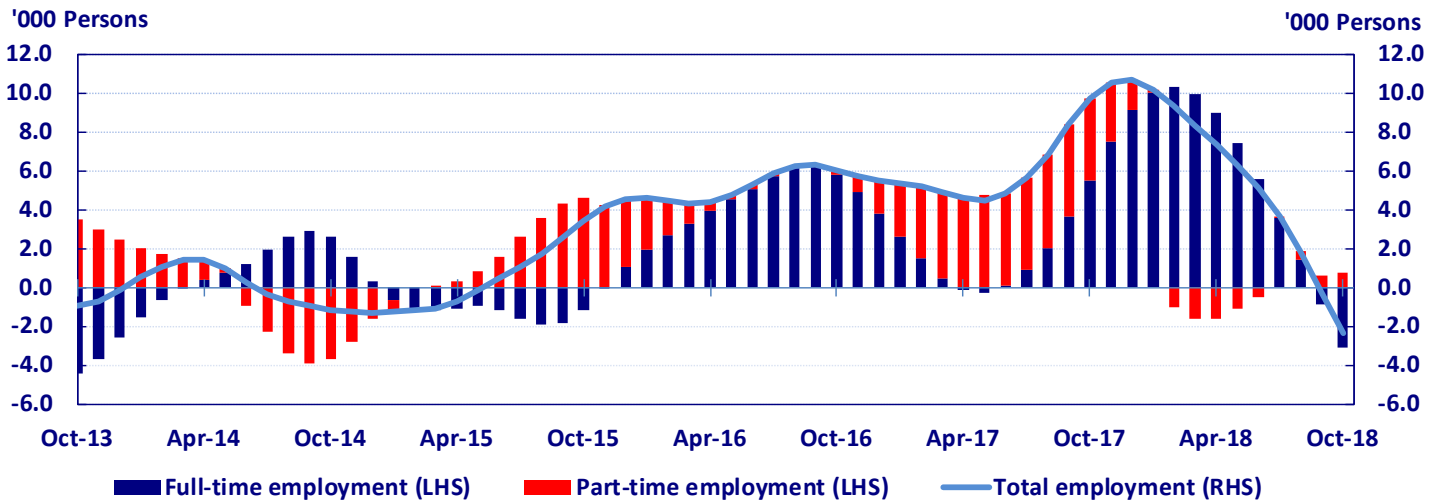
Source: ABS Cat. No. 6202.0

Monthly Change in Full-time and Part-time Employment (Persons), Trend, Monthly Data, ACT



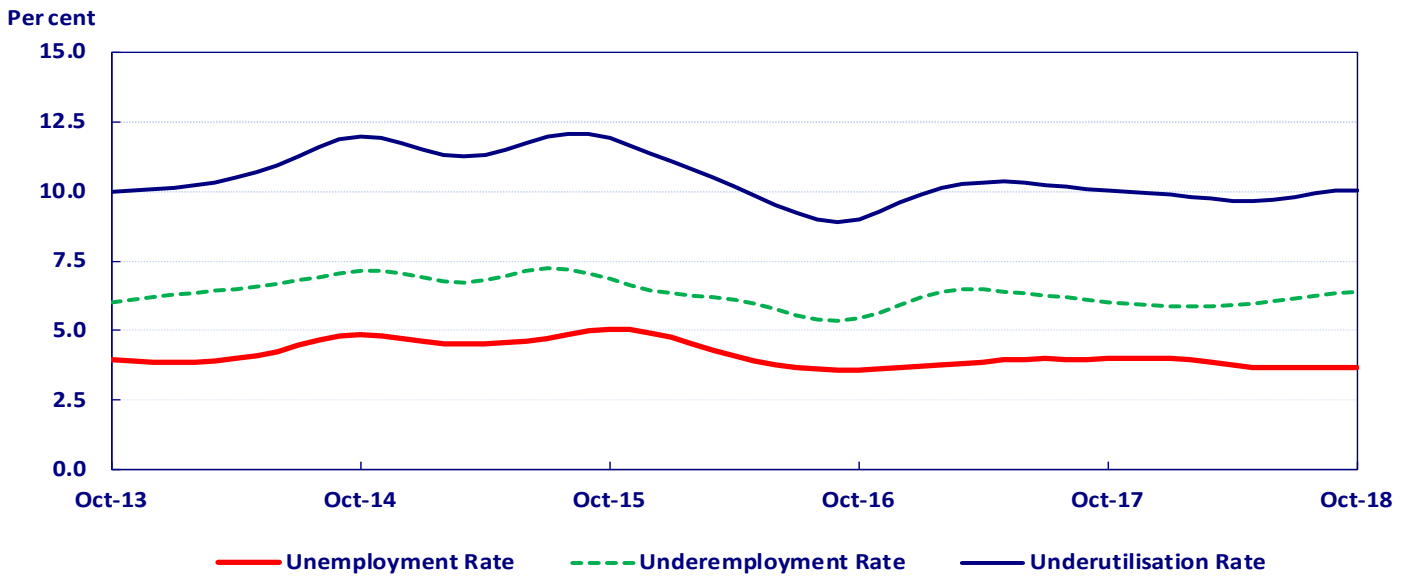
Source: ABS Cat. No. 6202.0

Through the year Change in Full-time and Part-time Employment (Persons), Trend, Monthly Data, ACT



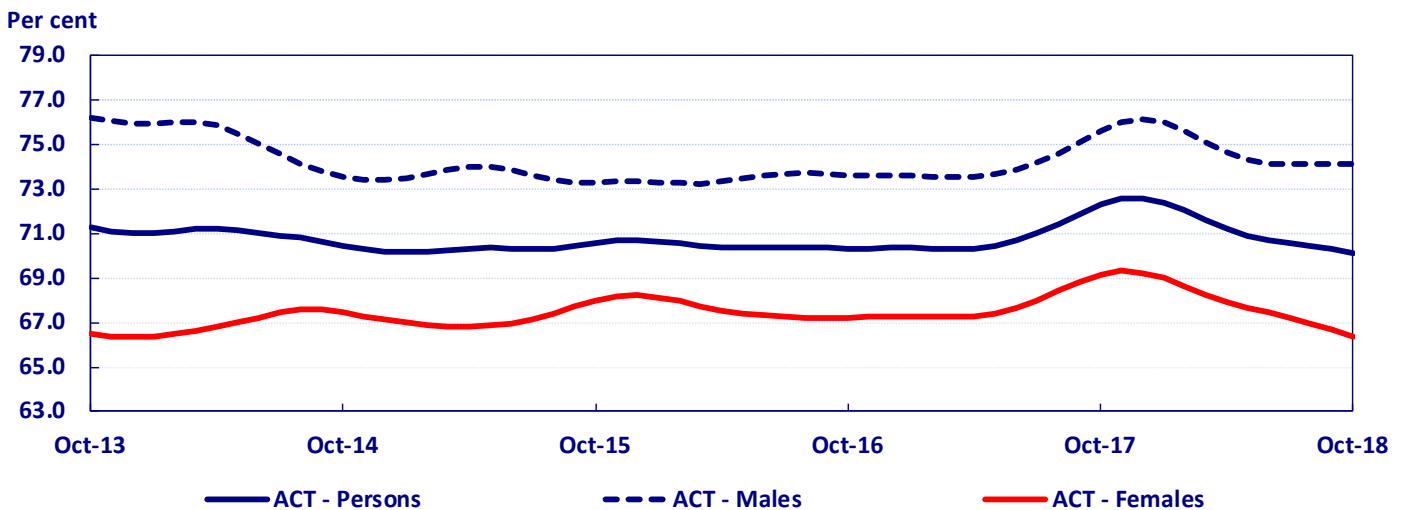
Source: ABS Cat. No. 6202.0

Underutilisation Rate, Trend, Monthly Data, ACT



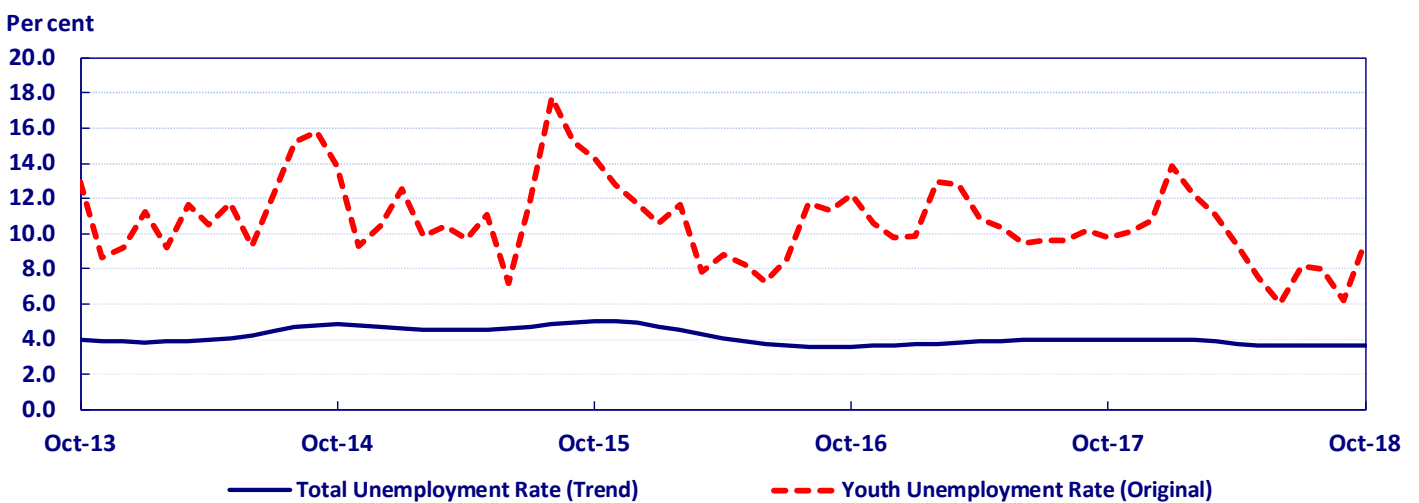
Source: ABS Cat. No. 6202.0

Participation Rate by Sex, Trend, Monthly Data, ACT



Source: ABS Cat. No. 6202.0

Unemployment Rates, ACT



Source: ABS Cat. No. 6202.0