

Labour Force – August 2017

ABS Cat. No. 6202.0



ACT
Government

Chief Minister, Treasury and
Economic Development

Publication Release Date: 14 September 2017 | Brief Release Date: 14 September 2017 | Next Brief Release Date: 19 October 2017

ACT unemployment rate increased to 4.7 per cent in August 2017

ACT (Trend¹)

The unemployment rate increased by 0.1 percentage points to 4.7 per cent in August 2017, from a downwardly revised unemployment rate of 4.6 per cent (it was 4.8 per cent at the time of the July 2017 release). This remains the second lowest unemployment rate of all jurisdictions. Through the year² to August 2017, the unemployment rate increased by 1.1 percentage points.

In August 2017, employment increased by 300 persons to 217,100 persons. Through the year to August 2017, employment increased by 2,100 persons (1.0 per cent).

The participation rate in August 2017 increased by 0.1 percentage points to 70.8 per cent. This remains the second highest participation rate of all jurisdictions. Through the year to August 2017, the participation rate increased by 0.5 percentage points.

National (Seasonally Adjusted)

The unemployment rate was steady at 5.6 per cent in August 2017. Through the year to August 2017, the unemployment rate fell by 0.1 percentage points.

In August 2017, employment increased by 54,200 persons (0.4 per cent) to 12,269,000 persons. Through the year to August 2017, employment increased by 325,700 persons (2.7 per cent).

The participation rate increased by 0.2 percentage points to 65.3 per cent in August 2017. Through the year to August 2017, the participation rate increased by 0.6 percentage points.

Total Employment, ACT and Australia, August 2017

	Level	Change	
		Monthly	tty ²
<u>ACT- Trend</u>			
Unemployment rate (%)	4.7	+0.1 ppts ³	+1.1 ppts
Unemployed persons ('000)	10.7	0.3	2.8
Employed persons ('000)	217.1	0.3	2.1
Employment growth (%)		0.1	1.0
Participation rate (%)	70.8	+0.1 ppts	+0.5 ppts
<u>Australia - Seasonally Adjusted</u>			
Unemployment rate (%)	5.6	0.0 ppts	-0.1 ppts
Unemployed persons ('000)	727.5	-1.0	7.8
Employed persons ('000)	12,269.0	54.2	325.7
Employment growth (%)		0.4	2.7
Participation rate (%)	65.3	+0.2 ppts	+0.6 ppts

Source: ABS Cat. No. 6202.0

¹ Monthly removals of the effect of systematic calendar related patterns and the irregular (non-seasonal) influences across the entire series result in revisions of trend estimates on a monthly basis. Estimates are rounded and discrepancies may occur between the sums of component items and totals.

² Through the year (tty) is the percentage change from the same period in the previous year.

³ Percentage points (ppts).

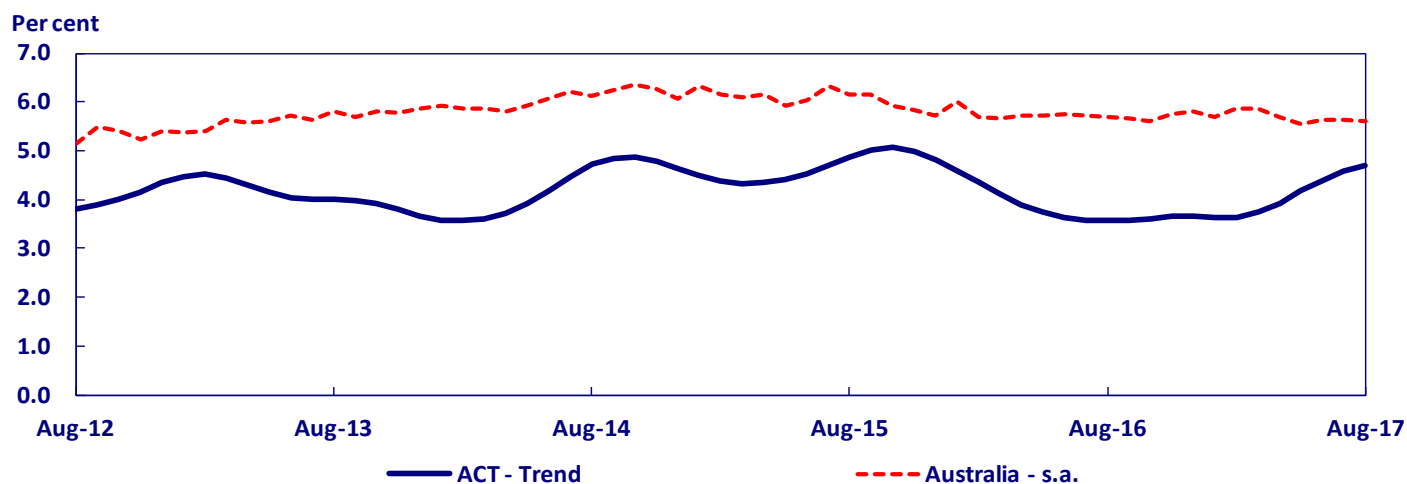
Commentary

There were 300 jobs created in August 2017 in the ACT, driven by an increase of 400 full time jobs, partially offset by a decrease of 100 in part time jobs. Over the twelve months to August 2017, 2,100 jobs were created in the ACT, driven by an increase in part time jobs (up 2,200), partially offset by a decrease in full time jobs (down 100). This may reflect employer hiring preferences and/or the entry of secondary household income earners into the labour market, who may desire non full time employment.

The increase in both the unemployment rate and the participation rate in the ACT in August 2017 was as a result of an increase in the number of unemployed people looking for work. The increase in the unemployment rate over the past three months, is being driven by the entry of a new cohort into the ABS labour force survey for the ACT, which has a relatively high unemployment rate. The trending methodology utilised by the ABS for the ACT also means that the impact of this new cohort is being reflected in revisions to the recent historical series.

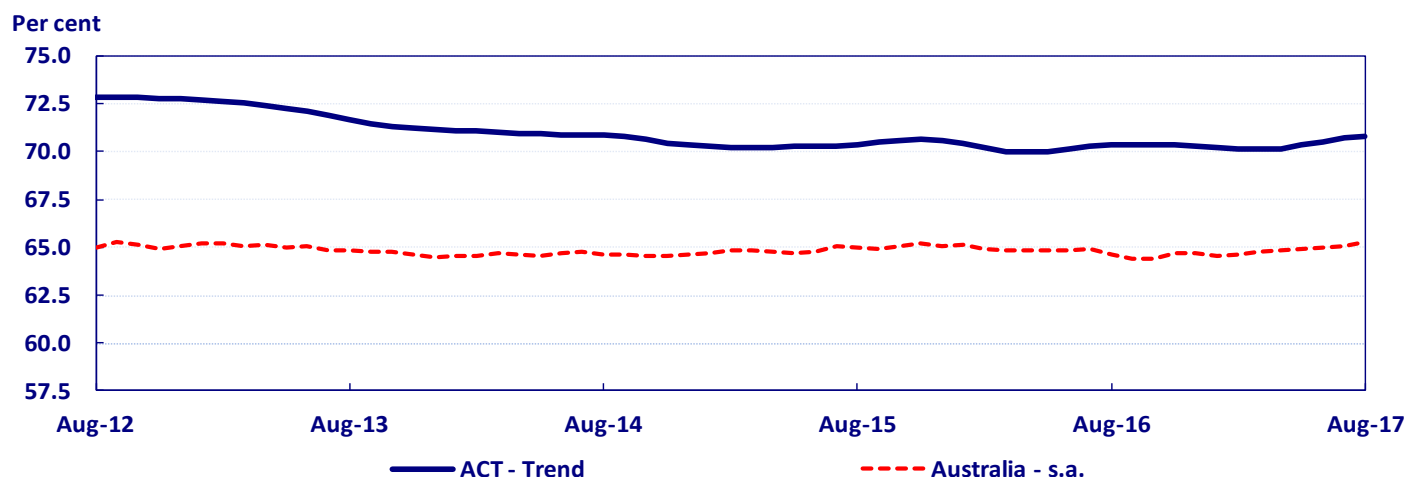
The youth⁴ unemployment rate in the ACT was unchanged at 9.9 per cent in August 2017 and decreased by 2.0 percentage points over the past 12 months. This remains below the national average of 12.7 per cent⁵.

Unemployment Rate, ACT and Australia



Source: ABS Cat. No. 6202.0

Participation Rate, ACT and Australia

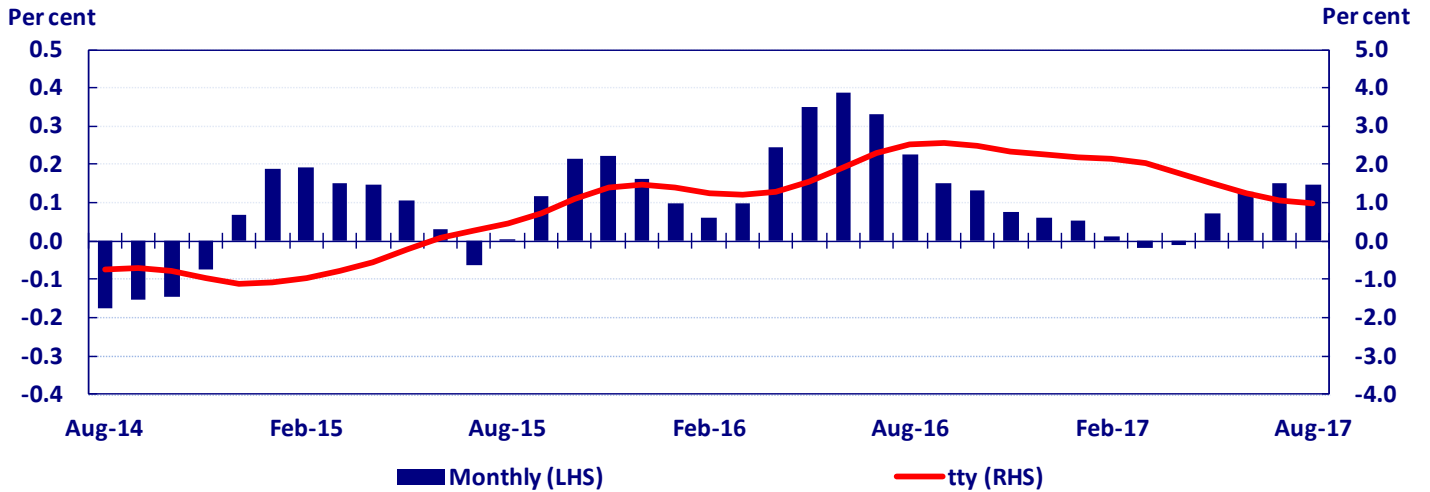


Source: ABS Cat. No. 6202.0

⁴ Youth employment is defined as the employment for those aged 15-24 years; Data for states/territories is in original terms only and should be used with caution due to its volatility.

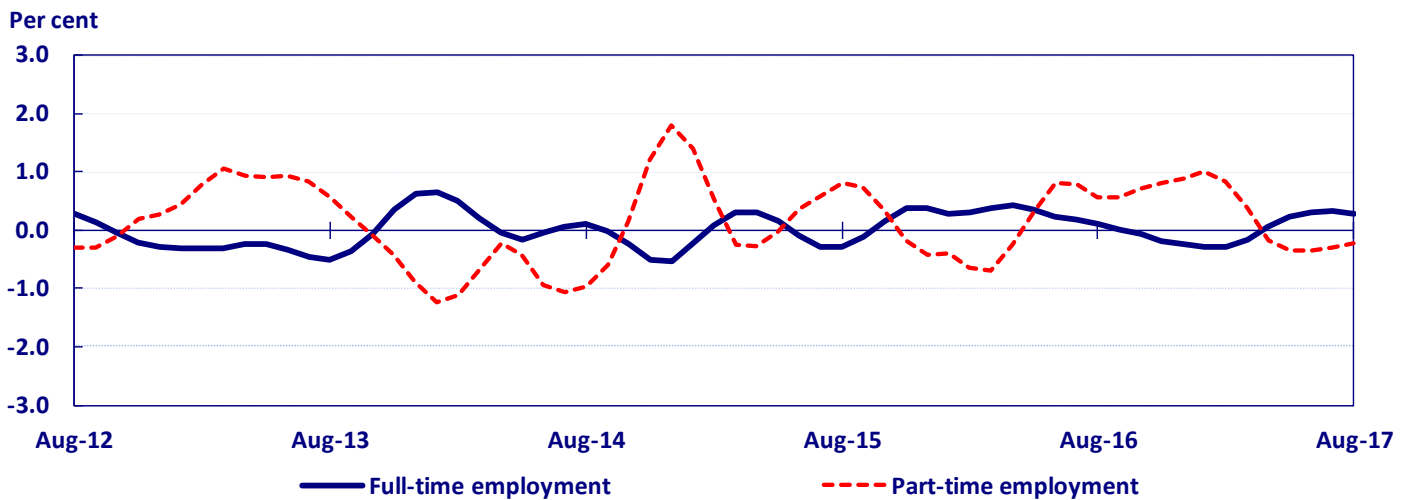
⁵ Youth unemployment rate for Australia is in seasonally adjusted terms.

Employment Growth, ACT, Trend, Monthly Data



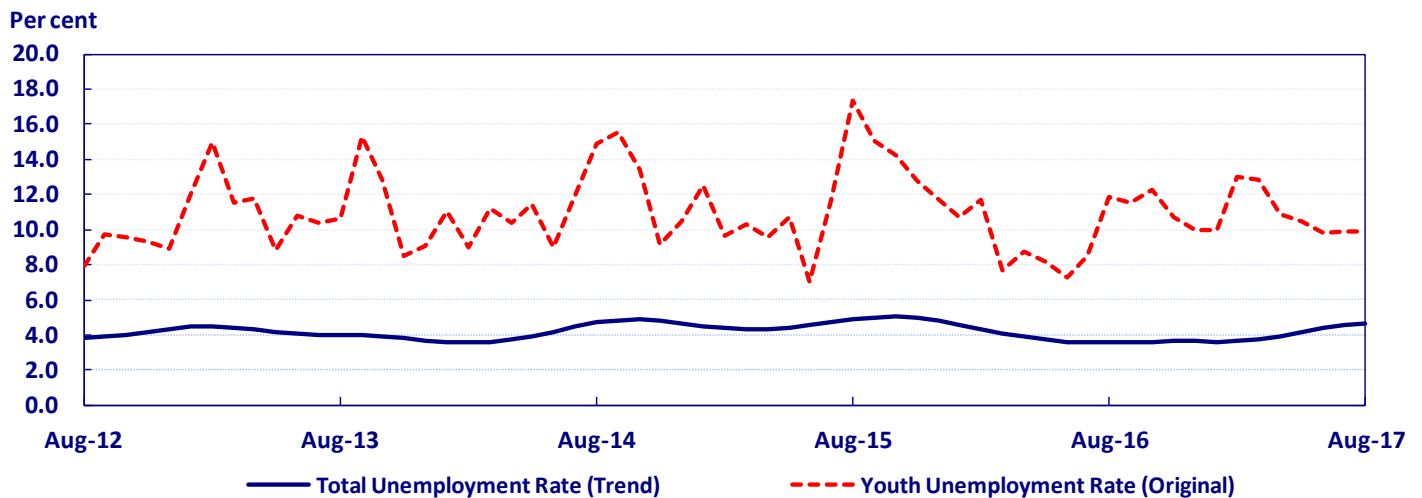
Source: ABS Cat. No. 6202.0

Full-time & Part-time Employment Growth, ACT, Trend, Monthly Data



Source: ABS Cat. No. 6202.0

ACT Unemployment Rates



Source: ABS Cat. No. 6202.0